

SAVE
—THE—
DATE

17-18-19
SEPTEMBER

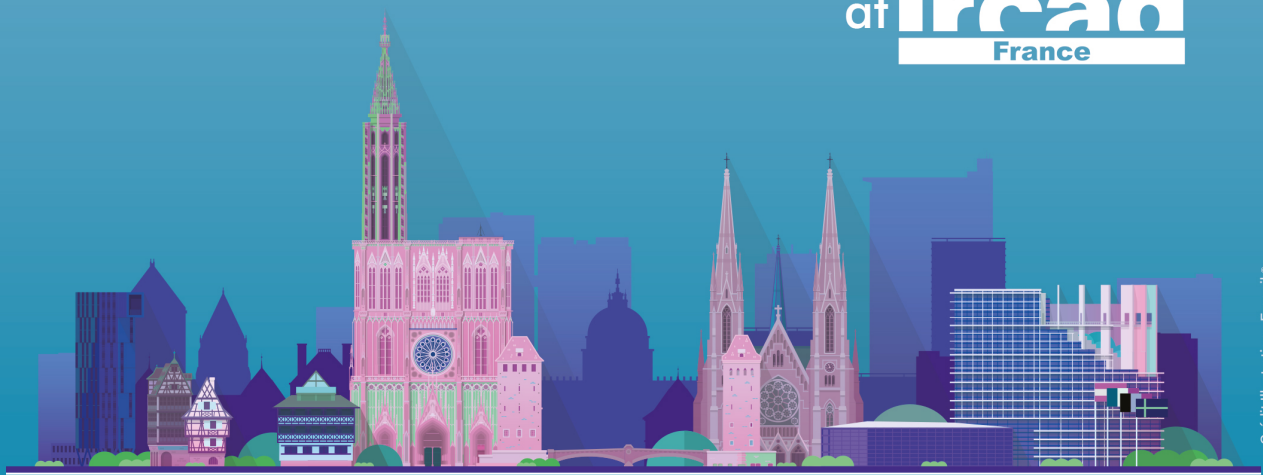
EUS-ENDO 2026

INTERNATIONAL
LIVE COURSE

www.eus-endo.org

COURSE DIRECTOR:
Dr Marc Giovannini

at **ircad**
France



Credit Illustration : Freepik®

STRASBOURG

— FRANCE —



Organisation Générale : MCO Congrès - www.mcocongres.com
Villa Gaby - 285 Corniche JF Kennedy - 13007 Marseille - Tél. : 04 95 09 38 00
Inscriptions : audrey.soulier@mcocongres.com • Partenaires : claire.bernard@mcocongres.com



"Thursday 17 September"

08:00	<p>08:00 - 08:25 REGISTRATION AND WELCOME</p>	Welcome Desk
08:25	<p>08:25 - 08:30 OPENING</p> <p>Congress President: Marc GIOVANNINI (Marseille, France)</p>	Auditorium Paul Kagame
08:30	<p>08:30 - 10:30 LIVE DEMONSTRATIONS</p> <p>Live demonstrations performed by international experts with interactive discussion and transmitted from the Gastroenterology department, ERASME Hospital, Brussels</p> <p>Moderators: Stéphane KOCH (Besançon, France), Mahmoud OMAR (Kuwait), Leonardo SOSA VALENCIA (strasbourg, France) Experts: Marianna ARVANITAKIS (Brussels, Belgium), Fabrice CAILLOL (Marseille, France), Guido COSTAMAGNA (Rome, Italy), Jacques DEVIÈRE (Brussels, Belgium), Marc GIOVANNINI (Marseille, France), Julia GAUCI (United Kingdom), Mostafa IBRAHIM (Egypt), Arnaud LEMMERS (Bruxelles, Belgium), Mathieu PIOCHE (Lyon, France)</p>	Auditorium Paul Kagame
10:30	<p>10:30 - 11:00 COFFEE BREAK</p>	Exhibition Area
11:00	<p>11:00 - 13:00 LIVE DEMONSTRATIONS</p> <p>Live demonstrations performed by international experts with interactive discussion and transmitted from the Gastroenterology department, ERASME Hospital, Brussels</p> <p>Moderators: Stéphane KOCH (Besançon, France), Mahmoud OMAR (Kuwait), Leonardo SOSA VALENCIA (strasbourg, France) Experts: Marianna ARVANITAKIS (Brussels, Belgium), Fabrice CAILLOL (Marseille, France), Guido COSTAMAGNA (Rome, Italy), Jacques DEVIÈRE (Brussels, Belgium), Marc GIOVANNINI (Marseille, France), Julia GAUCI (United Kingdom), Mostafa IBRAHIM (Egypt), Arnaud LEMMERS (Bruxelles, Belgium), Mathieu PIOCHE (Lyon, France)</p>	Auditorium Paul Kagame
13:00	<p>13:00 - 14:00 LUNCH BREAK</p>	Exhibition Area
14:00	<p>14:00 - 16:00 LIVE DEMONSTRATIONS</p> <p>Live demonstrations performed by international experts with interactive discussion and transmitted from the Gastroenterology department, ERASME Hospital, Brussels</p> <p>Moderators: Stéphane KOCH (Besançon, France), Pierre MAYER (Strasbourg, France), Mahmoud OMAR (Kuwait) Experts: Marianna ARVANITAKIS (Brussels, Belgium), Fabrice CAILLOL (Marseille, France), Guido COSTAMAGNA (Rome, Italy), Jacques DEVIÈRE (Brussels, Belgium), Marc GIOVANNINI (Marseille, France), Julia GAUCI (United Kingdom), Mostafa IBRAHIM (Egypt), Arnaud LEMMERS (Bruxelles, Belgium), Mathieu PIOCHE (Lyon, France)</p>	Auditorium Paul Kagame
16:00	<p>16:00 - 16:30 COFFEE BREAK</p>	Exhibition Area
16:30	<p>16:30 - 17:00 ORAL COMMUNICATIONS</p> <p>Moderators: Solene HOIBIAN (Marseille, France), Jean Philippe RATONE (Marseille, France)</p>	Auditorium Paul Kagame

Friday 18 September

08:30	<p>08:30 - 10:30 THEORETICAL SESSION: ENDOSCOPIC RESECTION AND MANAGEMENT OF COMPLICATIONS</p>	
--------------	--	--

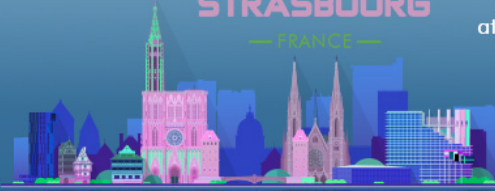


"Friday 18 September"

08:30	<p>Moderators: Fabrice CAILLOL (Marseille, France), Guido COSTAMAGNA (Rome, Italy), Mathieu PIOCHE (Lyon, France)</p> <p>Esophageal ESD: « Lesion selection, technical tricks, post-resection management. Arnaud LEMMERS (Bruxelles, Belgium)</p> <p>Colorectal ESD : for which lesion, which technique, what oncological decision? Mathieu PIOCHE (Lyon, France)</p> <p>Upper GI leaks and fistula: a practical therapeutic algorithm. Julia GAUCI (United Kingdom)</p> <p>Discussion.</p>	Auditorium Paul Kagame
10:30	<p>10:30 - 11:00 COFFEE BREAK</p>	Exhibition Area
11:00	<p>11:00 - 12:30 THEORETICAL SESSION: PROXIMAL MALIGNANT STENOSIS</p> <p>Moderators: Marc GIOVANNINI (Marseille, France), Mostafa IBRAHIM (Egypt)</p> <p>HOW TO ASSESS THE INDETERMINED PROXIMAL BILIARY STENOSIS? Marianna ARVANITAKIS (Brussels, Belgium)</p> <p>IS A PRE SURGICAL BILIARY DRAINAGE INDICATED FOR HILAR CHOLANGIOPCARCINOMA? Guido COSTAMAGNA (Rome, Italy)</p> <p>WHAT BILIARY DRAINAGE FOR AN INOPERABLE HILAR CHOLANGIOPCARCINOMA? Jacques DEVIÈRE (Brussels, Belgium)</p> <p>Discussion.</p>	Auditorium Paul Kagame
12:30	<p>12:30 - 13:30 LUNCH BREAK</p>	Exhibition Area
13:30	<p>13:30 - 15:10 THEORETICAL SESSION: NEW TECHNIQUES AND INNOVATIONS</p> <p>Moderators: Marianna ARVANITAKIS (Brussels, Belgium), Marc GIOVANNINI (Marseille, France), Mahmoud OMAR (Kuwait)</p> <p>OPTIMIZING EUS IMAGES FOR WHICH DIAGNOSTIC BENEFITS ? Marc GIOVANNINI (Marseille, France)</p> <p>EUS GUIDED LIVER EVALUATION: ADVANCED AND BIOPSY, PORTAL HYPERTENSION EVALUATION AND TREATMENT. Mostafa IBRAHIM (Egypt)</p> <p>HYBRID EUS- ERCP INDICATIONS. Fabrice CAILLOL (Marseille, France)</p> <p>Discussion.</p>	Auditorium Paul Kagame
15:10	<p>15:10 - 15:40 COFFEE BREAK</p>	Exhibition Area
15:40	<p>15:40 - 16:40 ORAL COMMUNICATIONS</p> <p>Moderators: Fabrice CAILLOL (Marseille, France), Marc GIOVANNINI (Marseille, France)</p>	Auditorium Paul Kagame

Saturday 19 September

09:00	<p>09:00 - 10:30 HANDS ON SESSION 1</p> <p>Animators: Fabrice CAILLOL (Marseille, France), Fabio CIPOLLETTA (Naples, Italy), Yanis DAHEL (Marseille, France), Marc GIOVANNINI (Marseille, France), Domenico GALASSO (Montreux, Switzerland), Solene HOIBIAN (Marseille, France), Mariana MILASHKA BRIHAY (Avignon, France), Jean Philippe RATONE (Marseille, France)</p> <p>ESD Upper GIT.</p> <p>EMR colorectal.</p> <p>EUS interventional.</p> <p>ERCP with cholangioscopy.</p> <p>ERCP.</p> <p>EUS interventional including RFA.</p> <p>Defect closure.</p>	Laboratoire expérimental
10:30	<p>10:30 - 11:00 COFFEE BREAK</p>	Welcome Desk



"Saturday 19 September"

11:00 - 12:30
HANDS ON SESSION 2

11:00

Animators: **Fabrice CAILLOL** (Marseille, France), **Fabio CIPOLLETTA** (Naples, Italy), **Yanis DAHEL** (Marseille, France), **Marc GIOVANNINI** (Marseille, France), **Domenico GALASSO** (Montreux, Switzerland), **Solene HOIBIAN** (Marseille, France), **Mariana MILASHKA BRIHAY** (Avignon, France), **Jean Philippe RATONE** (Marseille, France)

ESD Upper GIT.
EMR colorectal.
EUS interventional.
ERCP with cholangioscopy.
ERCP.
EUS interventional including RFA.
Defect closure.

Laboratoire
expérimental